

coming home. again

In October 2012, Hurricane Sandy generated a Hudson River surge that briefly but violently tore through Evette Rios' childhood home—a ground-floor apartment on Manhattan's western edge. It upended all her parents' possessions and left a polluted mess behind. Evette, an interior designer and host of *Recipe Rehab* on CBS, set out to revamp the space into something her parents could call home again—for years to come.

BY KRISTINE KENNEDY | PHOTOS DAVID A. LAND | STYLING ED GALLAGHER





hide

LABOR OF LOVE The hurricane dislocated Francisco and Nilsa Rios for an entire year. In the renovation, daughter Evette made better use of space. "I try to build things like a boat, with tons of drawers and hidden storage," she says.

refresh

SCORE! Evette picked up these étagères at a Goodwill store.



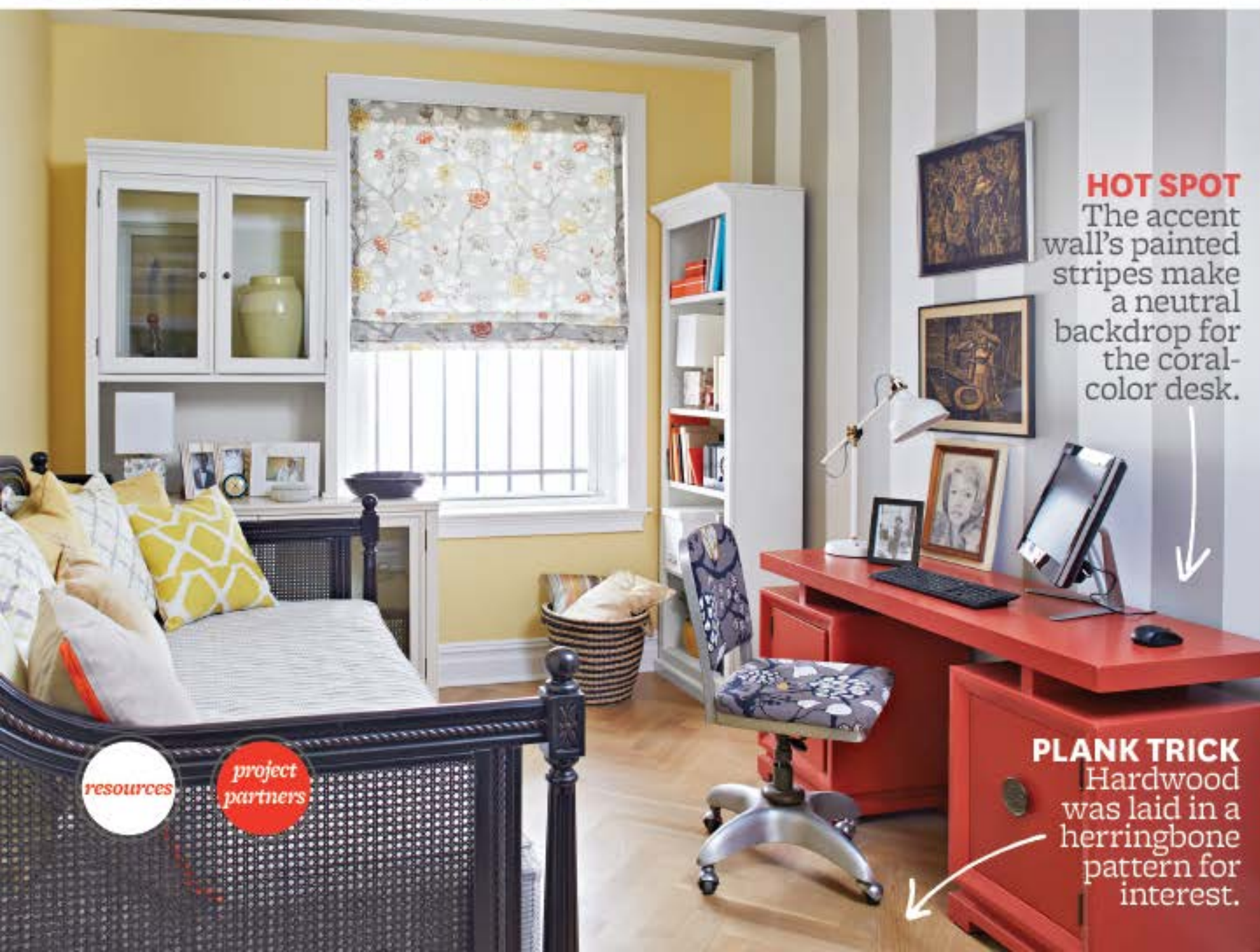
video: Evette talks about the makeover

GATHER 'ROUND

"For each room, I incorporated at least one thing that was old," Evette says. In the living room, the focal point is her father's refurbished work table, *left*, which lifts from coffee table to dining height and now features a flip top.

GUEST WORK

Evette's childhood bedroom, *below*, is now a high-functioning guest room and office with the addition of a painted thrift store desk, vertical storage, and a space-saving trundle daybed.



HOT SPOT

The accent wall's painted stripes make a neutral backdrop for the coral-color desk.

PLANK TRICK

Hardwood was laid in a herringbone pattern for interest.

resources

project partners

cover

this issue

fresh

home

style

food

better

recipe index

SCORE! Evette picked up these étagères at a

resources

Interior designer—EvetteRios; evetterios.com.

Contractor—CC Builders Group; ccbuildersgroup.com.

Living room: window treatments Winding Leaves in Cobalt—The Shade Store; theshadestore.com. **Sleeper sofa** Baldwin, **ottomans** Travis Ottomans in Indochine Ikat in Stone (with legs in Dove Gray)—ballarddesigns.com. **Armchair** Fairfax in Blue Paisley Linen, **swing-arm lamps** Clairmont Brass Sconce, **side table** Lianne Chinoiserie Box on Stand—Ethan Allen; ethanallen.com.

Coffee table similar styles available—Evette Rios; evetterios.com. **Pillows with ball fringe** Bauble in Mud Grey and Charcoal—Canvas; canvashomestore.com.

Rug, étagères—Goodwill; goodwill.org. **Guest bedroom: daybed** Louis Daybed in Black, **glass hutch** Tuscan File Hutch & Console, **bookcase** Tuscan Flush Bookcase—ballarddesigns.com. **Desk**—Goodwill; goodwill.org. **Yellow-and-white graphic patterned pillow** Arbor in Yellow and Cream—Judy Ross Textiles; judyrosstextiles.com. **Other pillows**—IKEA; ikea.com.

Kitchen: cabinetry Lisbon in Cottage White (top) and Harbor Mist (bottom) by Schuler Cabinetry, **countertop** Crystal Couloir by Allen + Roth, **appliances** LG—lowes.com. **Tile**—Allison Goldenstein for Mixed-Up Mosaics; mixed-upmosaics.com. **Pendant lights** Lambert in Aged Brass—Hudson Valley Lighting; hudsonvalleylighting.com. **Counter-height chairs** Sheldon—Frontgate; frontgate.com. **Microwave**—KitchenAid; kitchenaid.com. **Hood** Spagna Vetro White Ultra Thin—ebay.com.

Bath: vanity Ballard, **faucets and showerhead** Pinstripe, **toilet** Tresham Elongated—kohler.com. **Sconces** Garden City in Polished Nickel—Hudson Valley Lighting; hudsonvalleylighting.com. **Bedroom: bed** Allesandra—ethanallen.com. **Corona**—Ebay. **Storage platform** Queen-Sized Storage Bed Frame with footboard—IVG Stores, LLC; storagebedstore.com. **Window treatments** Pinch Pleat Drapery in Wool Flannel, color: Azure from the Wool + Blends collection—The Shade Store, LLC; theshadestore.com. **Side tables**—bungalow5.com. **Ottoman** Travis Ottoman in Indochine Ikat, color: Stone and Dove

gray—ballarddesigns.com. **Bedding**—bedbathandbeyond.com. **Bedside lamps**—homegoods.com.



video: Evette talks about the makeover

ND
m,
i at
g that
tte
ving
al
ther's
ork
ich
ee
g
w
top.

GUEST WORK

Evette's childhood bedroom, *below*, is now a high-functioning guest room and office with the addition of a painted thrift store desk, vertical storage, and a space-saving trundle daybed.



HOT SPOT

The accent wall's painted stripes make a neutral backdrop for the coral-color desk.

PLANK TRICK

Hardwood was laid in a herringbone pattern for interest.

hide

cover

this issue

fresh

home

style

food

better

recipe index

OPEN PLAN

Evette seized the chance to open the galley kitchen. "When I was a kid and we had people over, my mom was like a meerkat, popping in and out of her hole," she says.

refresh

COOL COMBO

A stainless steel sink in a farmhouse style blends old and new.

SMART Comfy swivel stools pull up to the counter and can be turned toward the living room.

see the damage

cover

this issue

fresh

home

style

food

better

recipe index



omfy
ools
the
nd
rned
e
m.

AFTER THE STORM



hide



ALL CLEAR

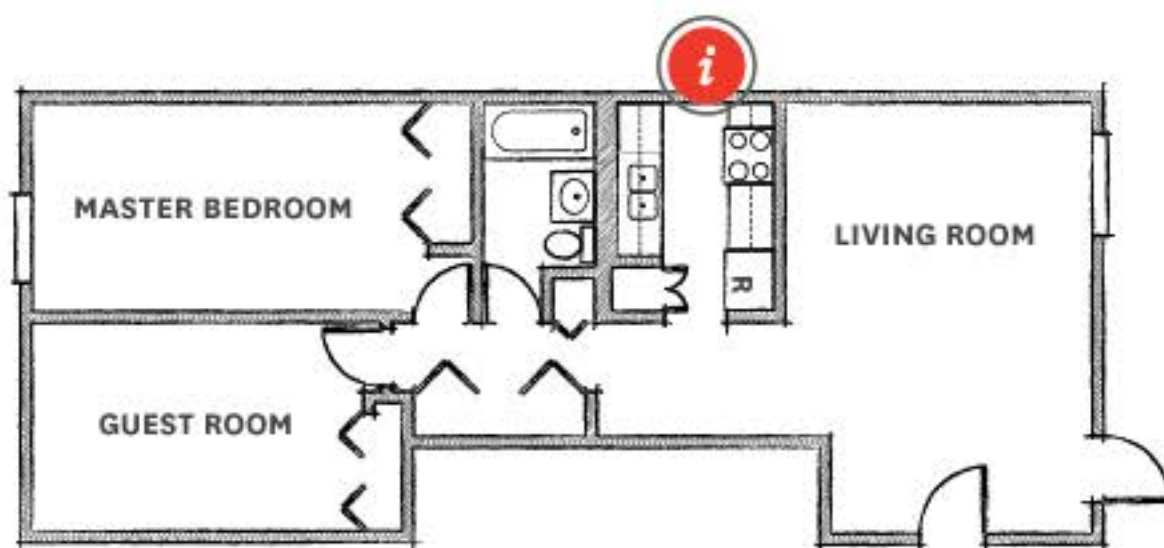
A glass partition reveals to-the-ceiling tile and eliminates the need for a shower door.

LIFT OFF

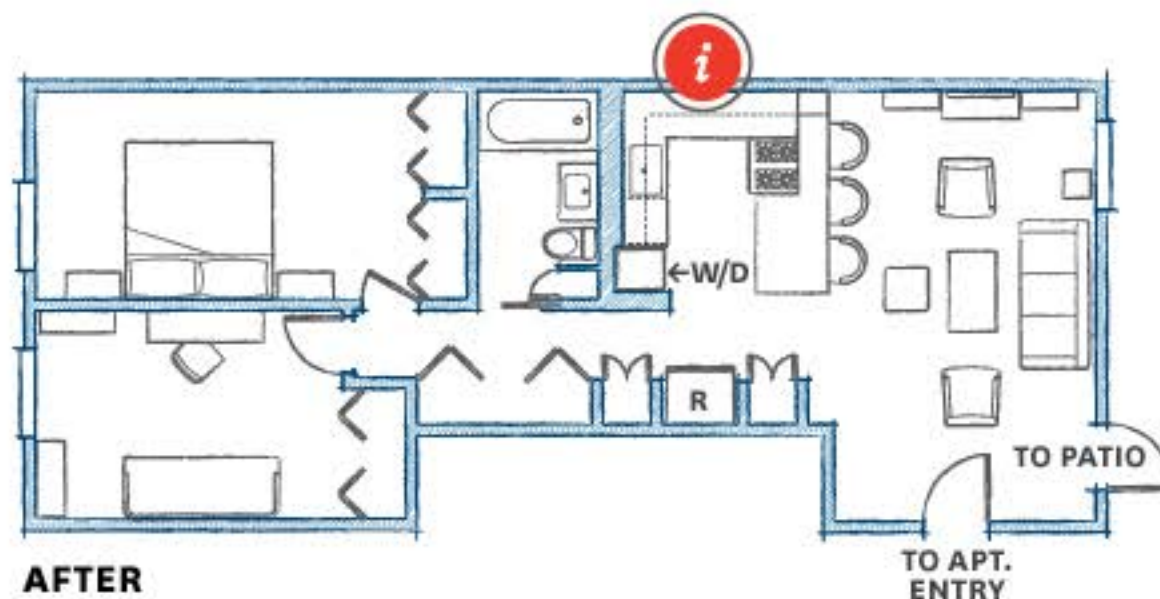
The bed is set on a hydraulic base insert that angles the mattress up, providing access to storage below for things like extra bedding, out-of-season clothes, and plastic bins.

ELBOWROOM

Evette fit in a wider vanity by annexing a hallway linen closet and replacing the bath's swinging door with a pocket door.



BEFORE



AFTER

video: see this home's smart innovations

